

## Jack 1

When ball is 30 -40 yard line:

Always look to throw down the line.

#2 checks inside as #9 runs down the line.

11 needs to decide where the space has been created.

1. If space has been created in the middle, then throw to #2 in the space

2. Then you can play it back to #8 or #5

3. #8 or 5 can then play a through ball to #9 or #4



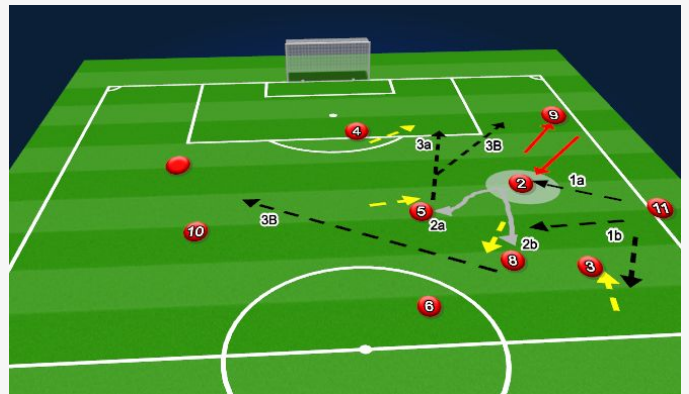
## Jack 2

Jack in action (Throw in play) Clubs and 1

1. play to #2

2. #2 plays to either #5 or 8

3. They can play it to either 4 or 9 or switch a diagonal ball towards #10 and 11.



## King

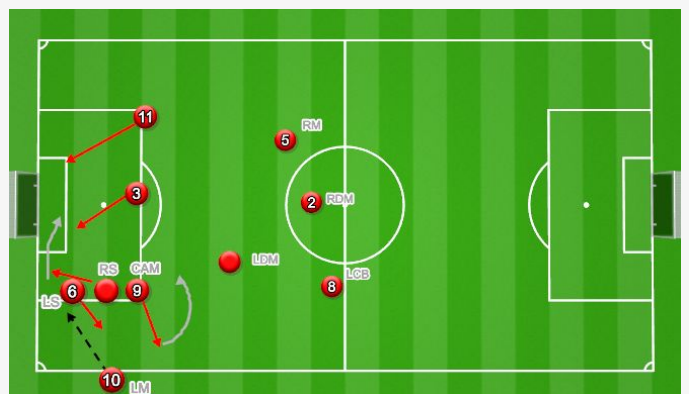
**King** (Also Diamond and 3)

1. #6 & 9 will check to ball

2. RS will run into the space #6 was in

3. #10 will throw it into the space, towards the byline

4. RS will hit a cut back to #3, #9, or #11

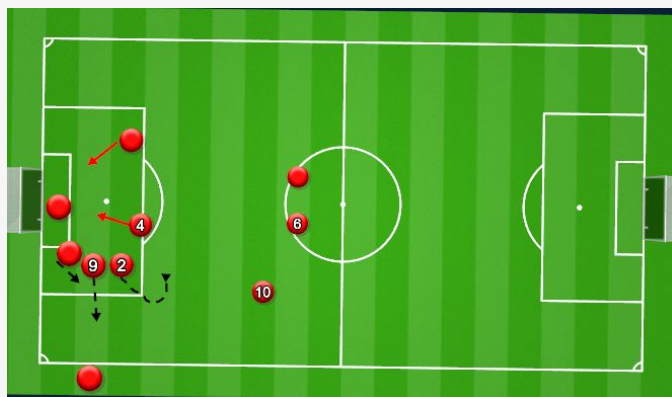


## Queen

### Queen:

Set up should include at least 5 field players

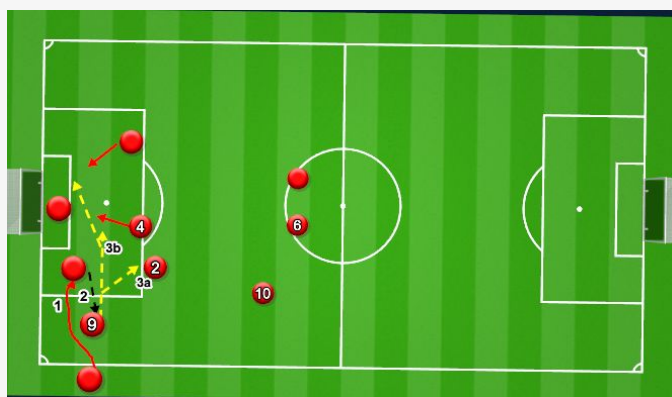
- one on the GK
- Three around the corner of the 6 yard box (They will make the movements/decoys)
- one in the slot and one around the far post



## Queen 2

### Queen (in action) (Hearts & 2)

1. #9 and #2 will check to ball and peel off
2. CF will check a few yards towards #9 space
3. Throw will go over #9 and to CF for a knock down
4. #9 will receive the knockdown and play it out to #2 or across the box to #4 or other winger.

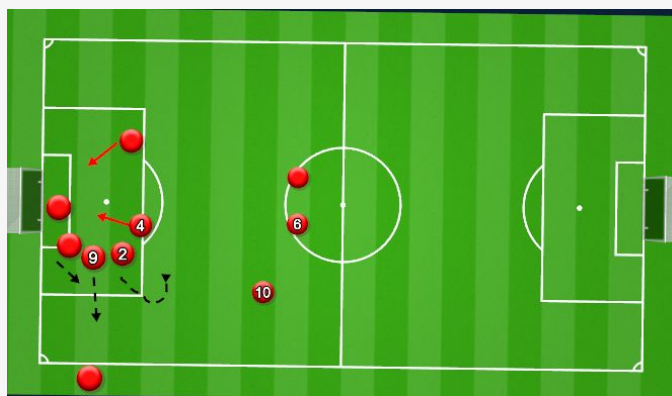


## Ace

### Ace

Same Set up as Queen: should include at least 5 field players

\* Different runs and flicks



**Ace** (in action) (Diamond & 4)

1. #9 and #2 will check to ball and peel off
2. CF will check a few yards towards #9 space
3. Throw will go over #9 and to CF for a flick/header
4. #4, #8, and #7 will crash the box to win the flick

