



a Reseller-Club: Premier Users' Club

Session: CenCal Cosmos 2007 Girls vs. Rocklin FC 2007 Girls
Mckay Kozielski, Clovis, United States of America

Period 1

Substitutions happen at the 15 and 30 minute marks.



Period 2

Substitutions happen at the 15 and 30 minute marks.



Set-Piece on Goal

Set-piece with two short options. The three players listed are the players on set-piece duty this weekend. This is only done once per game. Following this routine we shoot directly.



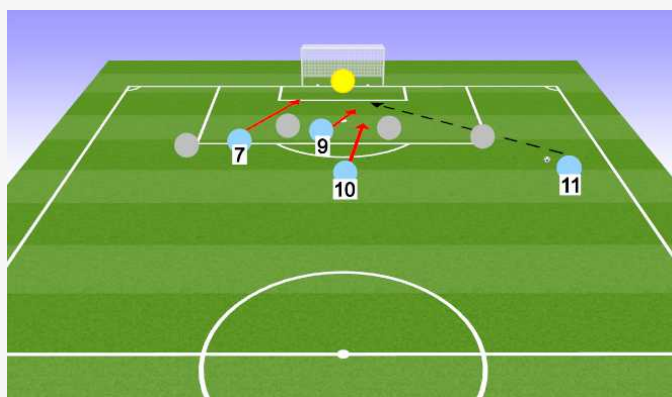
Gambling in the Box

The diagram illustrates the runs being made by our attacking players to crowd or crash the GK once a shot has been made. This is done for two reasons: disrupt the GK's vision and gambling on the odds that the GK drops the ball for us to score an easy tap in.



Gambling in the Box

The diagram illustrates a similar situation but from a cross. All players in and around the box **MUST** be aggressive on crosses. Runs into the box to attack the cross to score, disrupt the GK's visions, or gambling on the odds that the GK drops the ball for us to score an easy tap in.



Preventing the Switch

The diagram illustrates the team defending to preventing the opponent from switching the point of attack. In order to do this we leave the players on the far side open. We do this to create an overload in the center of the field in efforts from stopping the other team crossing the blue line. If the far side players receive the ball we **quickly** shift to reorganize the same shape.

